



COMPANY PROFILE



www.lppi.or.id



I N T R O D U C T I O N

Indonesia's banking industry has played a significant role in supporting Indonesian economy over the years. However, in building a strong banking industry, Indonesian banking faces many challenges.

Increase competition has characterized the dynamics of banking industry today. Customers demand a variety of products and services, forced the banking industry to continuously improved its capability and competetiveness.

Therefore, in addition to capital and technology, strong and reliable human capital is deeply needed.

Since its establishment in 1958, Indonesian Banking Development Institute (LPPi) has been aware of the importance of continuously enhance the competency of human resource in the banking sector. LPPi was established with the support of Bank Indonesia and the banking Associations, emphasizing in training, research, and consultation. These activities aim to improve the quality of human resources and people's knowledge on banking and financial institution.

Our Vision

To be a trustworthy and prominent Banking Development and
Financial Services Institute in ASEAN





Our Missions

Enhancing human capital quality in Banking and Financial Services through improvements of knowledge, skill and attitude to support a healthy banking industry.

Disseminate public knowledge of banking, current information from central banking and other financial services to support building a financial service Industry.



Lembaga Pengembangan
Perbankan Indonesia
Mitra Anda Membangun Masa Depan

BOARD OF CURATORS

Chair : The Governor of Bank Indonesia (Ex officio)

Members: Consist of ex officio Chairperson from the Association of Bankers i.e. Indonesian Private Banks Association, Indonesian Bankers Association, Indonesian Regional Banks Association, Indonesian Rural Bank Association, Indonesian Islamic Banks Association, and Foreign Banks Association.

Responsibilities:

To direct the policy in order to achieve the objectives as well as the development of institute.

To advice the managers in preparing their plans, education quality, consultation services, researches and other activities



PROGRAM EVALUATION COMMITTEE

Compositions:

Chair : Deputy Governor of Bank Indonesia

Secretary: Director, Banking Research and Regulation Directorate

Members: Ex officio Human Resources Development Directors of the major banks

Responsibilities:

- To give some inputs and advices towards the education and training program conducted by the institution.
- To evaluate the materials and modules as well as the education and training program that been done by the institution.
- To give inputs towards the development and training program.
- To establish rules while the code of conduct of the Education and Training Program of Evaluation Committee will be set up on its own

DIRECTORS PROFILE

Mujjana Soekarni
Director



Alumni of Yale University's Master's Program in International and Development Economics in New Haven, CT, USA with extensive experience in banking; in particular, economics, central banking and monetary affairs. He has been designated to many high level management positions such as Director of the Center of Education and Central Banking Studies (PPSK) and Director of Logistics and Deputy Director of the Directorate of Information Technology of Bank Indonesia. Among his published material is Financial Reforms and Transmission Mechanism of Monetary Policy in the SEACEN Countries at the SEACEN Centre, Malaysia, October 1999. He is also an alumni of the Master of Management Program at PPM School of Management (STM) Jakarta

Saifuddin Hasan
Director



Alumni of the Economics Faculty of Gajah Mada University (UGM) and the University of Nebraska at Lincoln, Nebraska, USA. Has more than 20 years of experience in banking particularly in banking restructuring, corporate restructuring, banking IT development, banking business development, project financing and sharia banking. His previous designation before Director of the Indonesian Banking Development Institute (LPPPI) was President Director of PT Bank Negara Indonesia Tbk (BNI)



Subarjo Joyosumarto
CEO

PhD alumni of the University of Colorado at Boulder, Colorado, USA with extensive experience in banking and monetary affairs. His previous designations include Alternate Executive Director of IMF and Deputy Governor of Bank Indonesia. Before being appointed as CEO of the Indonesian Banking Development Institute (LPPPI), he became the Executive Director (CEO) of the South-East Asian Central Banks (SEACEN) Research and Training Centre.



I. Supomo
Director

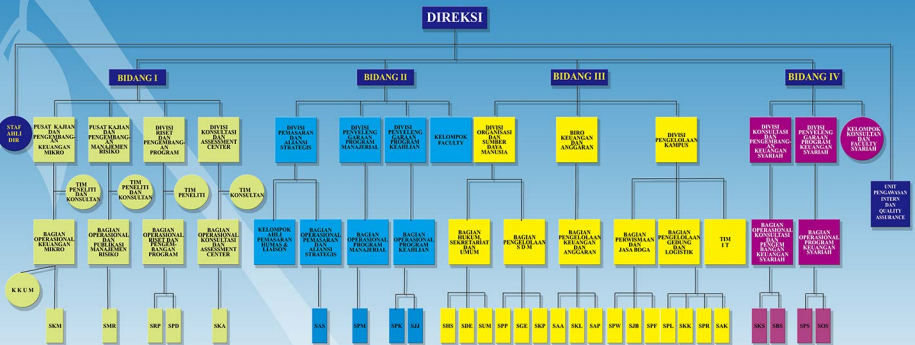
PhD alumni from the University of Colorado at Boulder, Colorado, USA with about 35 years of experience in banking. In that time frame, he was designated to many high level management positions, namely Director/Senior Executive Vice President of PT Bank Negara Indonesia Tbk (BNI), Executive Vice President/Senior Executive Vice President of PT Bank Mandiri, and Managing Director of PT Bank Dagang Negara. Currently, he is Commissioner of PT Permata Bank Tbk (PermataBank) and active at the Headquarter Committee of the Indonesian Economists Association (ISEI) and the Headquarter Committee of the Indonesian Bankers Association (IBA)



Harisman Sidi
Director

Alumni of the Economics Faculty of Gajah Mada University (UGM) and the Center for Development Economics at Williams College in Williamstown, Massachusetts, USA. Has broad experience in Islamic banking and over 20 years of experience in the banking industry with an extensive training and education background in monetary affairs, commercial banking and sharia banking. Before joining the Indonesian Banking Development Institute (LPPPI), he was appointed Director of the Directorate of Islamic Banking of Bank Indonesia and expert staff of the Board of Governors of Bank Indonesia.

ORGANIZATIONAL STRUCTURE





Lembaga Pengembangan
Perbankan Indonesia
Mitra Anda Membangun Masa Depan

EDUCATION PROGRAM



LPPPI conducts education and training for the banking industry in alignment with the concept of professional development programs. A new era emerged as LPPPI aims to meet international standards, through the motto 'Your partner in building the future', and achieved by services such as:

- Leadership and managerial courses
- Competency courses
- Certification courses
- Research, consultancy and assessment center

With over thousands of LPPPI Alumni spread within banks and other financial body.

International Cooperation:

In order to support the accomplishments of its vision and mission, LPPI has been working with various training institution from other countries such as: the Belgian Bankers Academy (BBA); the Australian Institute of Management (AIM), the International Center for Leadership in Finance (ICLIF); Malaysia - Institute of Bankers (IBBM); the International Center for Education in Islamic Finance (INCEIF); Financial Access Capital Partners BV (Financial Access); The Netherlands Institute for the Banking-, Insurance-, and Investment Industry (NIBE SVV); New Frontier Solutions Pte. Ltd; the Asian Institute of Finance (AIF); and Indonesian-Netherlands Association (INA). To accommodate the growth of Islamic banks, LPPI has also created an International Center for Development in Islamic Finance (ICDIF), and Center for Study and Development in Microfinance.





LPPI PROGRAMS

Top Management :
Sespibank®
Sespibank Eksekutif

Middle Management :
Senior Manager Program
Bank Simulation
Pemimpin Cabang
Branch Simulation

Lower Management :
Manajer Lini Pertama
Pemimpin Cabang Pembantu
Officer Development Program
Kepala Kantor Kas
Mini Banking - Operation and Practice

Micro financial Program
aims as a study center, development, research, training and
consultation to all party who wishes to develop micro finance.

The Micro Financial Program :

- Conduct Education and training in micro financial.
- Consultation services in micro bussiness development.
- Conduct a model research on successfull micro finance bussiness
- Perform a health assessment or Micro Finance Institute Rating
- Conducts services as bussiness partnership in order to gain access to a micro financial development fund from financial center



International Center for Development in Islamic Finance (ICDIF) was established to meet the needs for qualified human capital in the Islamic banking and finance industry as well as for the industry's business development both nationally and internationally.

In its implementation, ICDIF has 2 divisions, namely Division of Islamic Finance Program Administration and Division of Islamic Finance Consultation and Development. The scope of their activities include:

- Education, Training, Certification, Workshop and Seminar of Islamic Banking and Finance
- Human Capital Recruitment and Assessment of Islamic Banking and Finance
- Establishment of Standard Operating Procedures of Islamic Banking and Finance Products
- Establishment of Sharia Commercial Bank and Sharia Business Unit
- Socialization and Development of Islamic Banking and Finance
- Executive MBA in Sharia Banking and Finance Program in cooperation with SBM-ITB

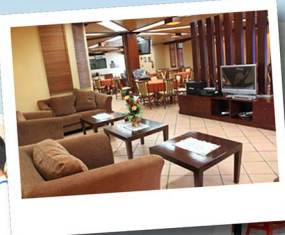
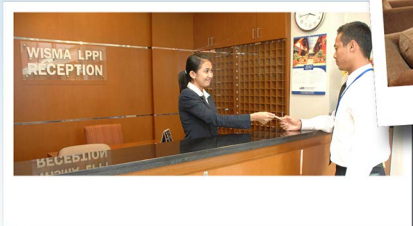
All facilities are supported by professionals and lecturers from active bankers and bureaucrats.



LPI Facilities consists of Education, Sports, Dormitory with over 225 room, Eatery, and other supporting facilities.

Multifunction Hall
Amphitheater Room
20-50 Person Classrooms
Bourse Game Room

Executive Lounge
Andrawina Canteen



Library
Polyclinic
Internet Access (Wi-Fi)
Parking Area
Bank ATM
Mosque
Assorted Trees and Animals
Photo Garden
Urban Forest
Co-op and Minimarket



Fitness Center Facility
Aerobic Facility
Indoor Futsal Facility
Indoor Badminton Facility
Additional Sport Facilities

COOPERATING INSTITUTION



Badan Wakaf Indonesia



UNIVERSITAS HIDAYATULLAH
SYARIF HIDAYATULLAH JAKARTA
Knowledge, Piety, Integrity



Partners and Clients

- ☒ Bank Indonesia
- ☒ Bank BNI
- ☒ Bank Mandiri
- ☒ Bank BTN
- ☒ Bank Rakyat Indonesia
- ☒ Indonesia Eximbank
- ☒ Bank Mizuho Indonesia
- ☒ Bank Sumitomo Mitsui Indonesia
- ☒ Bank of Tokyo
- ☒ Commonwealth Bank
- ☒ Chinatrust Bank
- ☒ ICBC Indonesia
- ☒ Deutsche Bank
- ☒ ABN Amro
- ☒ ANZ
- ☒ BCA
- ☒ Panin Bank
- ☒ CIMB Niaga
- ☒ Bank BTPN
- ☒ Bank Harda International
- ☒ Bank Capital Indonesia
- ☒ Bank Eksekutif
- ☒ Bank Buana Indonesia
- ☒ Bank Buana Indonesia
- ☒ Bank Jawa Timur
- ☒ Bank Jawa Tengah
- ☒ Bank Jawa Barat
- ☒ Bank Nagari
- ☒ Bank Riau Kepri
- ☒ Bank Kalimantan Timur
- ☒ Bank Aceh
- ☒ Bank Maluku
- ☒ Bank BPD Bali
- ☒ Bank Nusa Tenggara Barat
- ☒ Bank Nusa Tenggara Timur
- ☒ Bank Papua
- ☒ Bapepam LK
- ☒ Prudential Life Assurance
- ☒ Adira Multi Finance
- ☒ Aplikanusa Lintasarta
- ☒ Askrido Bank Syariah Mandiri
- ☒ Jamkrindo
- ☒ And many more

LPI Lembaga Pengembangan
Perbankan Indonesia
Mitra Anda Membangun Masa Depan

Jl. Kemang Raya No. 35

Jakarta Selatan 12730

P.O.Box 6708/JKSRB

Telp : (62-21) 7179 0919, 7179 2012

Fax : (62-21) 7195 409, 7180 710, 7179 4371

Email : div_aliansi_strategis@lppi.or.id

